

TREC GB NATIONAL CHAMPIONSHIPS

2021

Competitor Information

Brynllewelyn, Llanllwni, Pencader Carmarthenshire, SA39 9ED

By Kind Permission of Tim & Vicky Joynson, National Resources Wales & Tilhill Forestry

Grid Reference: SN 516 368 What3Words: toys.jubilant.model

Thank you for your entry to the 2021 TREC GB National Championships. Please read on for useful information to help you enjoy your weekend.

Hopefully the weather will be kind, and everyone will bring with them a smile, a sense of humour and will all have a fantastic weekend competing.

Updates/alterations may have to be made – please regularly check noticeboards at the Secretary for updates.

DIRECTIONS

If using a SatNav, use the postcode SA39 9ED. This will take you halfway down the farm lane, just continue on this lane into the venue.

The best route in for the majority of competitors is from **Carmarthen**. From the roundabout at the end of the dual carriageway, take the third exit (A40). At the next roundabout, take the first exit on the A485 and at the third roundabout take the second exit on the A485 towards Lampeter. Continue through various villages until you have been through New Inn (14 miles) Shortly after the B4336 (on left) to Llandyssul, fork right onto an unnamed road. Continue on this up onto open land and the turning to Brynllewelyn is on the right at the top. Their track is 2km long and a bit rough, but if you go slowly, it is fine. The entrance to the venue is over the cattle grid. Please follow the signed directions for lorries or 4 wheel drive vehicles.

Lorries will be parked on hard standing and the corralling for those horses travelling by lorry will be in an adjacent field.

Please see the provisional site map at the end of this document for site plan and access restrictions. Please note that the site plan may change due to weather and crop restrictions.

GENERAL INFORMATION

Whilst it has been quite warm this summer, it has been known to rain in Wales and the weather can change quickly. Please ensure you have waterproof rugs and layers for your horse and plenty of warm clothes for yourselves.

Please use day parking for visitors and judges.

For those who have requested Thursday arrival, please ensure you have paid Vicky Joynson directly for your extra night. For those staying on Sunday night, please pay Vicky directly for your extra night (£10 per night).

COVID INFORMATION

In Wales, the Covid measures in place are different to other areas of the UK. Face coverings will still be required in enclosed spaces and the 2m social distancing requirement will still be in place until the 7th August at the earliest. We wish to make sure that people feel comfortable attending and ask all attendees to be respectful and mindful of keeping a sensible distance.

Face coverings will not be mandatory from 7th August, but this requirement has been replaced by the need to carry out a risk assessment of the area and circumstances. This will be assessed once the organising team is on site, and updated information will be in the Competitor briefing information and displayed at the Secretary. Please be prepared for any requirement.

Please include a face covering and hand sanitiser as part of your POR equipment.

THE VENUE WILL BE OPEN FROM 2PM ON THURSDAY 5th AUGUST FOR THOSE WHO HAVE MADE PRIOR ARRANGEMENTS WITH THE OWNERS. PLEASE DO NOT ARRIVE BEFORE THIS TIME!

TIMETABLE

(all times subject to change)

<u>Friday</u>		
From 3pm	Site Opens	
3pm – 7pm	Secretary open for Rider / Volunteer registration and collection of welcome pack	
5.00pm – 8pm	Vetting	Designated area
5pm	PTV Course open for walking	
8pm	Competitor queries followed by judges briefing at 8:30pm	Maproom area
<u>Saturday</u>		
7.50am	Map Room starts	
6pm	Guided Course Walk (see notice board)	Meet at PTV Start
7.30pm	Meal and Social Evening	
<u>Sunday</u>		
8.00am	Vetting in PTV order	Designated area
9.00am	MA Starts	
9.15am	PTV Starts	
5.30pm	Prize giving ceremony	Maproom Area

CHECK IN

The Secretary will be available from 3pm on Friday for you to check in. Please bring your hat, body protector and horse's bridle including bit for inspection (the same bit must be used for all 3 phases). You can collect your championship souvenirs, bib and wristband (which will double as your meal ticket for Saturday evening meal if ordered). If you would like to enter for the team competition, please let the Secretary know before 8pm (4 riders per team, £24 per team to enter).

Due to Covid-19, a competitor briefing will not be held this year. A briefing sheet will be included in your Competitor Pack and the Traceur will be available on Friday evening near the maproom for any questions.

VETTING

All horses will be vetted on Friday evening. Please wear your number. On Friday, vetting times can be booked with the secretary. Please book a vetting 'slot' when you check in. Competitors arriving on Thursday are requested to book the early slots. On Sunday you will be vetted in PTV order as per the published times.

CORRALLING

We have over 60 horses, so please keep your corrals to a reasonable size. Anyone taking up too much room will be asked to reduce the size of their corral so that we can fit everyone in. There is a reasonable cover of grass, but you are advised to bring your own hay/haylage with you. Details of the local feed merchant are in the Schedule. Your corral must be electrified and display a label giving your contact details (a template is available at the end of the Competitors' Information). We recommend your horse wears a headcollar whenever it is loose in the corral. Please bring rugs in case of flies/rain/cool winds. Water is available in the field for equine consumption. There is **no** muck trailer, please make a pile in the designated area. This is for muck only and must not contain any string, plastic or other matter.

If your horse is corralled and you are leaving the site, you must organise someone to keep an eye on your horse while you are away and must include this person's contact details on the label too.

For those who have booked stabling directly with Vicky Joynson, please check in with Vicky at the Catering trailer on arrival so she can direct you to your stable. You will need to bring your own mucking out equipment to avoid sharing tools.

CAMPING AND PARKING

There is a separate area for tents and caravans. Please leave adequate space between tents and vehicles for fire safety reasons.

Brynlewllyn is a working farm and insists that all dogs **must be** on a lead. There will be livestock about, both on the venue and on the open land. You will be asked to pay a fine to the local Air Ambulance if you breach this rule. Repeated offenders will be asked to leave the venue and if a competitor, may be eliminated. Please pick up dog waste and take away with you.

Please leave the site clean and tidy and take all rubbish home with you.

PTV AND COURSE WALKS

The PTV course will be open for walking on Friday from 5pm. There will be a guided course walk on Saturday 6pm – 7pm. On Sunday, please be vigilant of times, and be prepared to go either before or after your allocated time due to any unforeseen circumstances.

POR MAPROOM, TACK CHECK and DIBBERS

The Maproom will be before the Tack Check & Start. You will have a minimum of 40 minutes on leaving the Maproom to get yourself and your horse ready and to present yourself to the Tack Check.

Electronic scoring equipment (Dibbers) will be used during the POR. Dibbers will be provided along with your record card and competitors will be able to practice 'dibbing' before starting the POR. We will provide a secure fixing to attach your 'dibber' to your equipment, but please take great care as they are expensive to replace.

Dibbers are attached using a 'yoyo' – which will either have a clip (plus pin) or a carabiner. In addition, for extra security, we recommend that you tuck your 'dibber' into a pocket. Please have a think before you arrive on how you might wish to attach this to your kit.

You will 'dib' in and out of checkpoints by inserting the end of your dibber into the hole in the unit. The units (and dibbers) make an audible noise when you make contact. If you are in doubt, 'dib' twice! The checkpoint judges will also be recording your times on their sheets. For tickets, please 'dib' and also record the number of the unit on your record card.

At the end of your ride, please go immediately to the 'download station' (which will be signed), where you will be given a printout of your times and when you hand over your dibber, a further download will record the information for the scorer.

OUTRIDING

Competitors are welcome to ride out from the venue but must stick to local roads, bridleways and byways. There are livestock on the open land. This may include cattle, sheep, horses and water buffalo. It is completely unpredictable where they will be and whilst they are all used to horses, please avoid riding through them where possible.

CATERING

The venue's catering stall will be open during the following times throughout the competition, serving drinks and light refreshments.

Friday – 5 – 9pm

Saturday – 7am – 5pm

Sunday – 7am – 7.30pm

Saturday Evening Social at 7.30pm. Made at Moithan will be providing Chicken Casserole or Baked Stuffed Aubergine for those who have pre-booked meals. Please bring with you plates, cutlery, chairs etc.

PHOTOGRAPHER

The official photographer on site will be Jonathon Cundy <https://www.jcimage.co.uk/>

PRIZE GIVING CEREMONY

The prize giving ceremony will take place in the Maproom Area once the scores are finalised on Sunday afternoon. You will be asked to sign a form before trophies can be taken away.

We would like to thank the following sponsors for their generosity in donations of prizes:

- Evan & Caroline Jones, Penlan, Llanybydder for sponsoring Level 2

- Performance Equestrian for donating a bridle voucher to the Level 4 Champion
- Roy Thomas (Farm Supplies) Ltd.
- SEIB
- V-bandz Ltd.

OTHER SERVICES

On call over the weekend are a Farrier & Vets.

Vets: Dyffryn Tywi Equine Clinic 01267 290890. Please inform the organiser if the vet is required during the event.

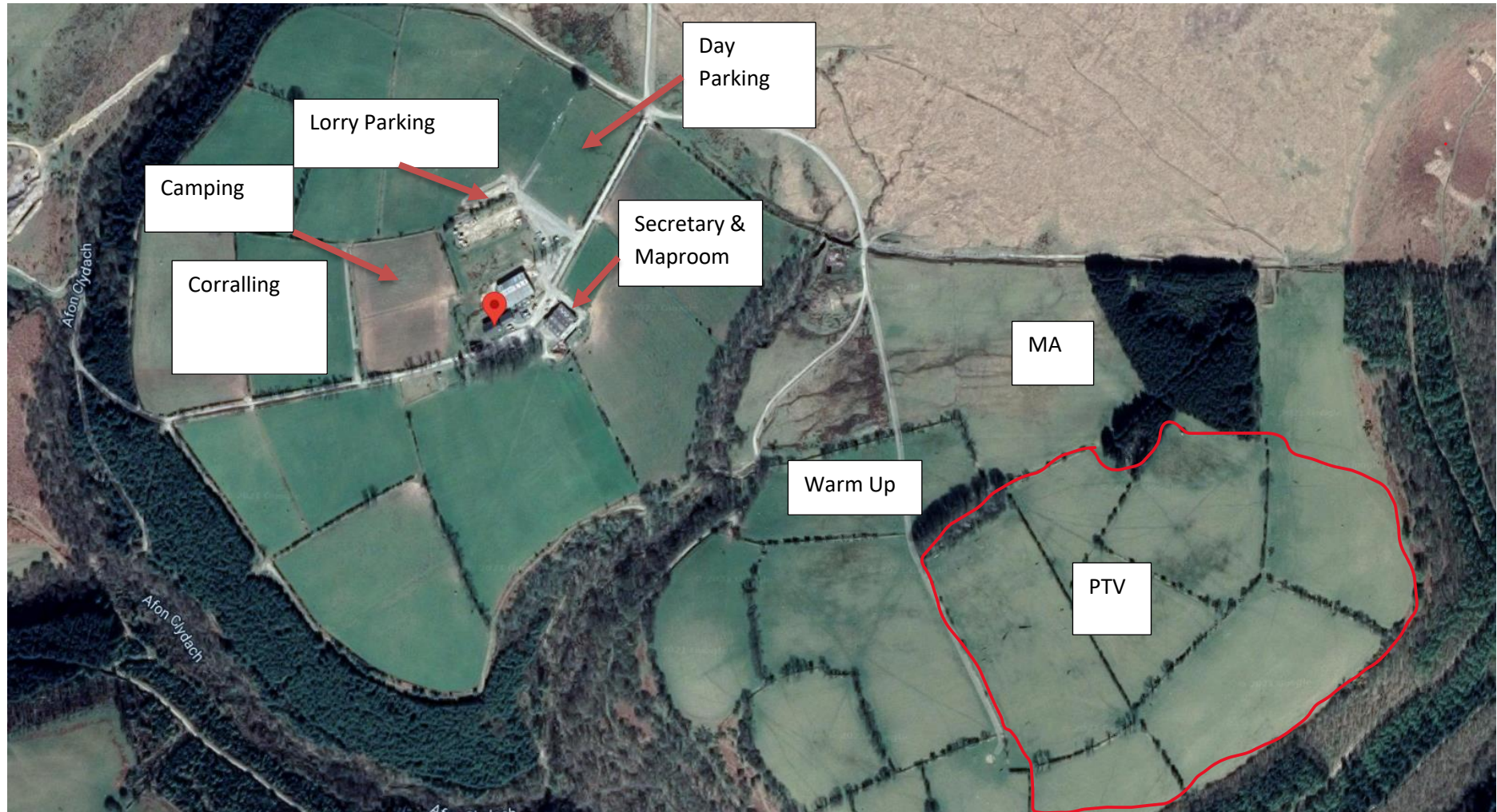
Farrier: Chris Harris 07973 600138. Please inform the organiser if you require the farrier's services.

Steve from Performance Equestrian is also hoping to attend over the weekend.

CONTACT PHONE NUMBERS

If you have any queries, please use the following numbers: 07788 747523 (Chris) or 07949 424879 (Amy) as the TREC GB office will not be manned after Wednesday 4th August.

SITE MAP



CORRALLING INFORMATION

Horse's Name	
Colour:	
Rider's Name	
Rider's Contact Number:	
Nominated Person:	
Nominated Person Contact Number:	
Vehicle Make & Colour:	
Vehicle Reg No:	